

# PLASTIC LAMINATE TOILET ENCLOSURES

**THE CORINTHIAN      TYPE: FP-500      Overhead Braced**

**MATERIALS:** Plastic Laminate over particle board.

**THICKNESS:** Doors..... Finished to 7/8" (22.225mm)  
Panels..... Finished to 7/8" (22.225mm)  
Pilasters..... Finished to 1 1/4" (31.75mm)

## CONSTRUCTION:

### Doors:

Finished to 7/8" (22.225) thick, constructed of .050" (1.27) high-pressure decorative laminate over three-ply core, resin impregnated, 45-pound density particle board; *NEMA* approved and used exclusively. Edge laminates are applied before face laminates.

### Panels:

Finished to 7/8" (22.225) thick, constructed of .050" (1.27) high-pressure decorative laminate over three-ply core, resin impregnated, 45-pound density particle board; *NEMA* approved and used exclusively. Edge laminates are applied before face laminates.

### Pilasters:

Finished to 1 1/4" (31.75) thick, constructed of .050" (1.27) high-pressure decorative laminate over three-ply core, resin impregnated, 45 pound density particle board; *NEMA* approved and used exclusively. Edge laminates are applied before face laminates. All pilasters will have a 3" (76.2) high #4 finish stainless steel plinth (type 304) and have a straight profile with square edges to match the pilaster profile. Pilasters are to be secured to the floor by a 16 gauge, hot-dipped galvanized channel fastened to bottom of pilaster. Anodized aluminum anti-grip headrail with .050" (1.27) wall thickness will brace the pilaster tops.

## FITTINGS:

Wall and pilaster-to-panel fittings are chrome-plated zamac die castings. All connections must be with 1-ear or 2-ear brackets.

## HARDWARE:

Each compartment will be complete with all hardware, door hinges, latch, stop and keeper, coat hook, as well as all necessary fittings and fastenings for a complete installation. Hinges and door strikes are fastened by means of tamper-proof Torx-Pin Head through bolts, which are polished chrome plated. All other screws to be tamper-proof Torx-Pin Head chrome plated. Doors are to be hung on concealed gravity hinges. Upper hinge shall use a 3/8" (9.525) diameter steel pin. All hinges will have wrap-around flanges with a minimum of 5/8" (15.875) wrap onto all pilasters.

## OPTIONAL:

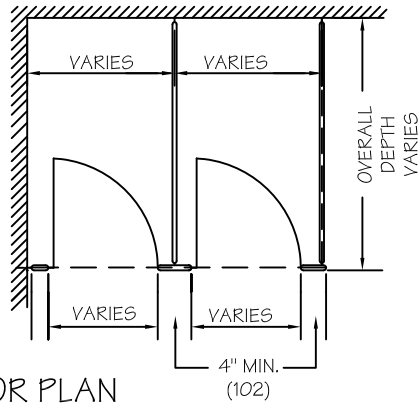
Steel Core pilasters with 11 gauge steel core; full height and width of pilasters; supplied only on 6" (152.4) wide or larger pilasters. Stainless (type 304) edging around perimeter.



95 State Street, Westbury, New York 11590  
Tel: 516-333-2600 ~ Fax: 516-333-2618  
[www.Metpar.com](http://www.Metpar.com) ~ [Sales@Metpar.com](mailto:Sales@Metpar.com)

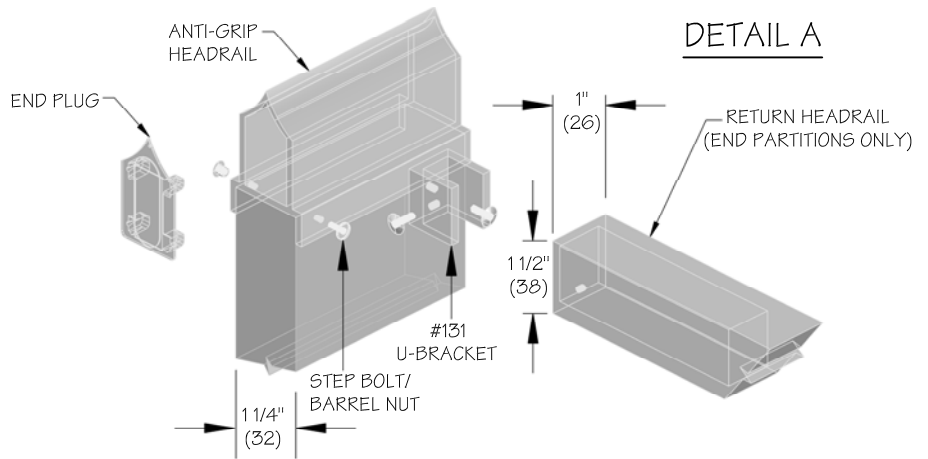
*Sanymetal*

DIMENSIONS IN ( )= MILLIMETERS

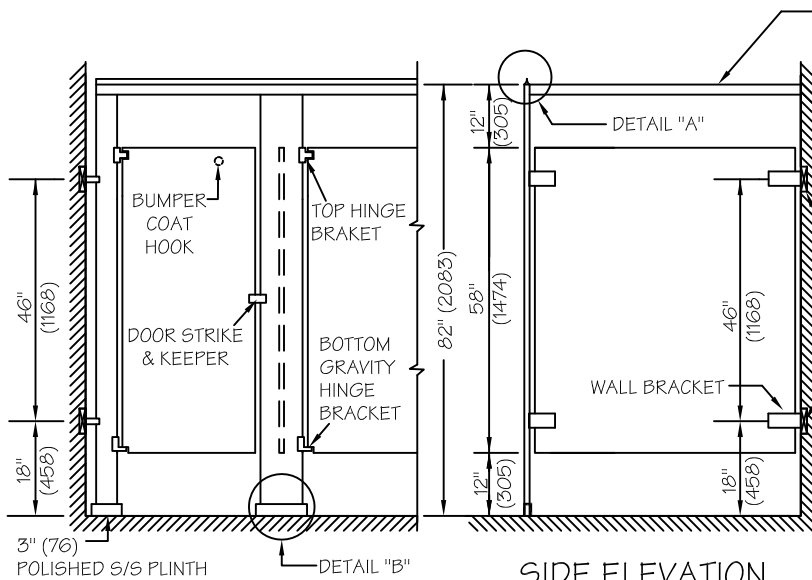


## FLOOR PLAN

(DOTTED LINES INDICATE HEADRAIL)



## DETAIL A



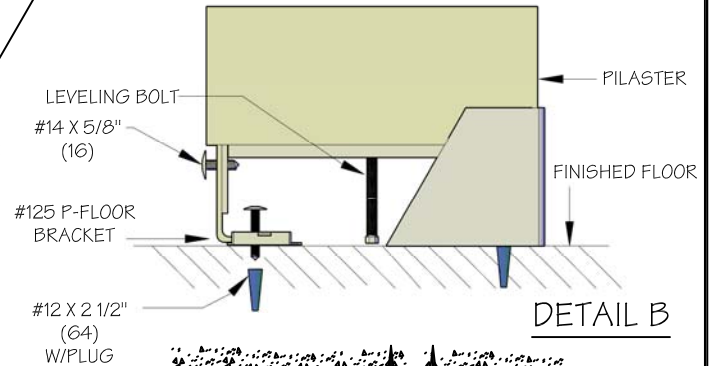
## SIDE ELEVATION

**NOTES:** This drawing is a standard detail intended to show general information. See shop drawings for actual job layout and specific job conditions that supercede any conflicting information on this sheet.

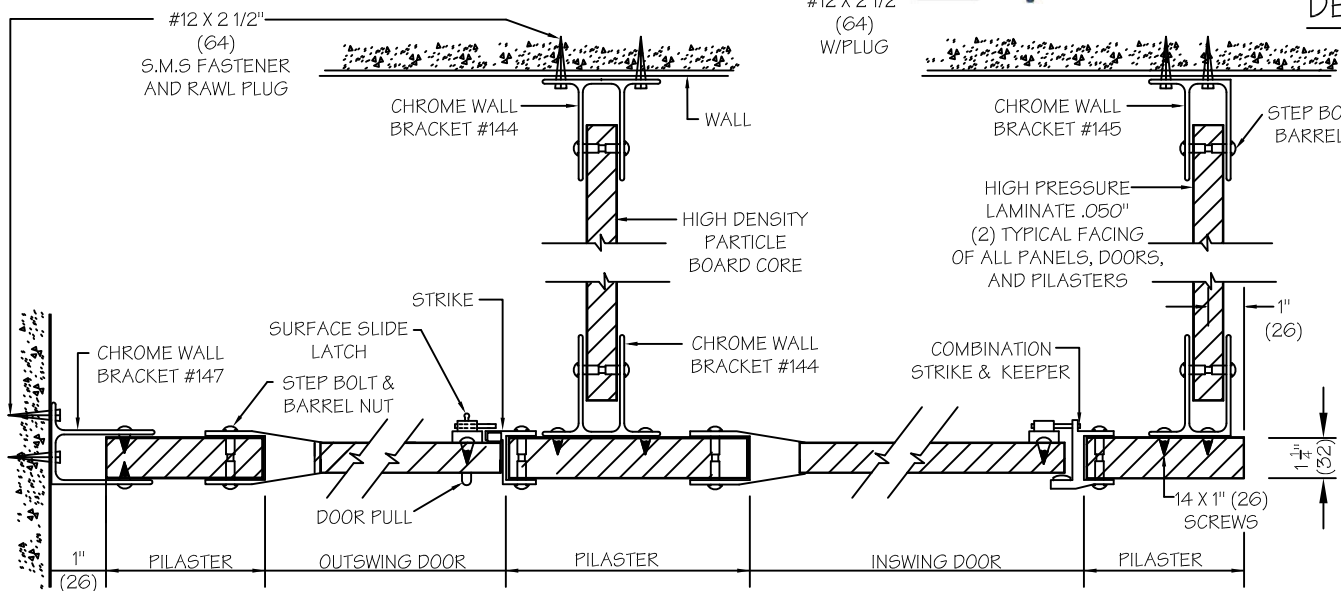
Blocking (by others) shown for standard CPZ stirrup brackets. for full height or any other bracket, consult with Metpar distributors for blocking information and locations.

## FRONT ELEVATION

@ DRYWALL USE BLOCKING



## DETAIL B



95 State Street, Westbury, NY 11590 www.Metpar.com  
Tel:516-333-2600 Fax:516-333-2618 Sales@Metpar.com

PLASTIC LAMINATE  
STANDARD DETAIL FP 500  
THE CORINTHIAN

FP500PL.DWG

10/22/2014